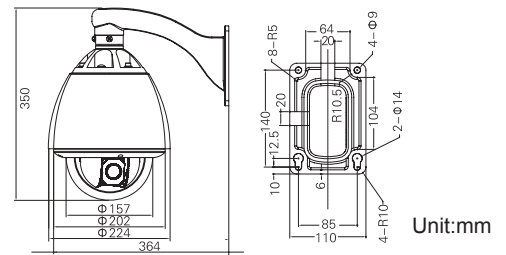




FEATURE

- 360° continuous pan rotation
- Pan 0.01°~180°/S, Tilt 0.01°~120°/S, Preset: 500°/S
- Pan Tilt accuracy +/- 0.07°
- Comprehensive and Convenient Function setting via English OSD Menu
- Programmable 220 preset positions
- 4 pattern tours, each one with 180s memory
- 8 cruising tracks, each cruising track has 32 preset positions
- 6 alarm inputs and 2 outputs
- 8 Privacy Zones(24 selectable)
- RS-485 multiple protocols, Pelco_P, Pelco_D compatible
- Timing activation function
- AMP quick installation structure
- IP66-rated waterproof
- Build-in fan and heater, temperature auto control

DIMENSIONS (mm)



CAMERA SPECIFICATIONS

Model	TC-H220DN
CCD	1/4" Super HAD CCD
Picture Element	752H x 582V
Sync System	Internal / External
Video Output	1.0 Vp-p / 75 Ohms
White Balance	Auto
Horizontal Resolution	580 TV Line
S/N Ratio	50 dB
Electronic Shutter	1 - 1/10000 s
Minimum Illumination	0.01Lux
Focus Length	f = 3.9 - 85.8 mm
Iris	Auto/Manual
Focus	Auto/Manual
Back Light Compensation	Auto
Zoom	220X (Optical 22X ; Digital 10X)
Gain	Auto
Signal	PAL/NTSC

DOME SPECIFICATIONS

Power Supply	AC24V/2.5A
Operating Temperature	-35 °C - 60°C
Operating moisture	< 90%
Power Consumption	50W
Communication	RS-485 bus,
Communication transmission speed	2400/4800/9600BPS
Protocols	Pelco-D, Pelco-P Compatible
Pan Rotation	0.01° - 180°
Tilt Rotation	0.01° - 120°
Pan/Tilt Accuracy	+/- 0.07°
Preset Speed	500° /s
Pan Angle	360° Continuously
Tilt Angle	90°
Size	364 x 350 x 202 mm
Weight	5.6 kg
Preset Positions	220
Auto Scan	8 Groups
Cruise Track	8 Groups
Cruise Points Qty per cruise group	32 Preset Positions
Pattern Tours	4 Groups
Alarm	6 alarm inputs and 2 outputs
Privacy Zone	8 zones
Protection	IP65 water proof/3000V lightning proof
Fan, Heater	Fan and heater auto-starts 24VAC